

# Godwin Pumps®

## Temporary Road Ramps

**F**or use with 4-, 6-, 8-, 12- and 18-inch pipelines, Godwin road ramps provide a temporary crossing for low-traffic industrial, mining, commercial and residential areas where vehicular access over a pipeline is required.

With everything from pumps, valves and hoses to light towers, generators and road ramps, Godwin Pumps can completely outfit your temporary and long-term project site needs.



### Features

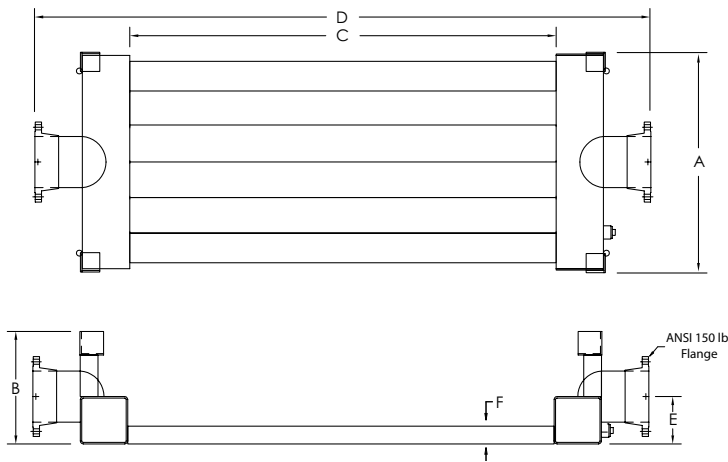
- Sturdy structural steel construction.
- Passable vehicle width of 12'.
- Low profile for easy crossing.
- Capable of passing solids and fitted with 150 lb. flanged inlet and outlet connections.
- Drain valve provides capability to drain ramp after use.
- Maximum pressure rating of 80 psi.
- Sturdy, stackable construction enables easy storage.

# Applications

Godwin Pumps road ramps are designed to provide easy crossing of a pipeline in low-traffic areas and can be used in a series to re-route traffic patterns.



## Drawing



Size	A	B	C	D	E	F	Max. Capacity (GPM)	Solids Passing Capability	Approx. Weight (lbs.)	Est. Equiv. Length
4"	24.75"	14.5"	144"	166"	6.125"	3"	500	2.5"	650	60'
6"	30.75"	15.5"	144"	172"	6.125"	3"	1,000	2.5"	850	90'
8"	36.5"	19"	144"	176"	8"	3"	2,000	2.5"	1,900	120'
12"	61"	24"	144"	180.5"	10.5"	3"	4,000	2.5"	2,300	180'
18"	95"	30.25"	144"	188.5"	13.625"	4"	7,000	3.5"	5,000	270'

- Maximum load capacity of 21,600 pounds per axle.
- Maximum crossing speed is 5 MPH.

**Home Office:**  
 Godwin Pumps of America, Inc.  
 One Floodgate Road  
 Bridgeport, NJ 08014 USA  
 (856) 467-3636 • Fax: (856) 467-4841  
 Email: sales@godwinpumps.com  
 www.godwinpumps.com

