

Godwin HS150HH Heidra Pump

The Godwin HS150HH hydraulic submersible pump is a compact self-contained pumping unit featuring a 6" (150 mm) submersible hydraulic side discharging pump and a diesel driven power pack. The HS150HH offers improved performance and operating efficiencies that cannot be matched by standard electric submersible models. With variable speed diesel engine power, the Heidra HS150HH can meet a variety of flow and head requirements up to 1,450 GPM (329 m³/h) and 280' (85 m) of total dynamic head with a simple throttle adjustment. Add the ability to pass solids to 1 $\frac{3}{8}$ " (35 mm) in diameter, dry-running capabilities and a cast chromium steel impeller, and you have a rugged dewatering/solids-handling, self-contained hydraulic submersible pump ready to go anywhere.



Features

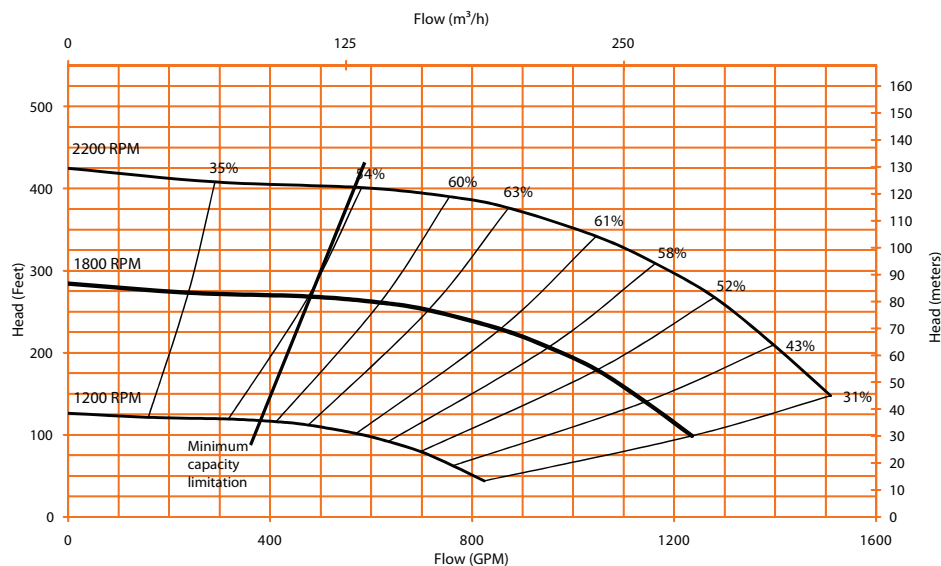
- Double mechanical seal in its own clean oil bath allows for indefinite dry-running. Inboard seal face is solid silicone carbide. The outboard seal is carbon or ceramic.
- The pump has independent bearings from the hydraulic gear motor, so pump loads do not affect gear motor performance.
- Open, solids-handling impellers with replaceable wearplates. Standard impeller is designed for general pumping, slurries and sludges.
- Piston motor connections are standard four-bolt SAE flange and shaft. This allows the bearing bracket to plug directly together.
- For ease of maintenance, the piston motor has a "plug-in" connection to allow for quick changeover when required.

Specifications

Pipe Connections	6" (150 mm) 150# Flange Discharge
Max. Flow	1,450 GPM (329 m ³ /h)
Max. Head	280' (85 m)
Solids Handling	Up to 1-3/8" (35 mm)
Impeller Diameter	15-1/8" (385 mm)
Max. Working Pressure	4,000 PSI (276 BAR)
Max. Op. Speed	1,800 RPM (Engine) 2,400 RPM (Pump)
Max. Op. Temp.	+180°F (82°C)
Hydraulic Output	85 GPM (19.3 m ³ /h)
Hydraulic Reservoir	80 GAL (303 l)
Fuel Tank Capacity	175 GAL* (662.4 l)
Fuel Consumption @ 1,800 RPM (Full Load)	13.5 GPH (51 l/h)

* 175 gal. (662.4 l) skid mount standard equipment

Pump Curve



Materials

Parts	Material Type
Pump Casing and Suction Cover	Cast iron
Front and Rear Wearplates	Cast iron
Pump Shaft	1-1/2% Ni/CR steel
Impeller	Cast CR steel, 341 BN hardness
Mechanical Seal	Double seal in oil bath with solid silicone carbide faces

Performance Table

Diesel Set: JD6068H
Power Output: 275 HP (205 kW) @ 2000 RPM

GPM	1400	1200	1000	800	600
Feet	210	300	350	380	400
PSI	91	130	152	165	173

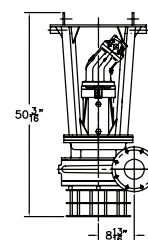
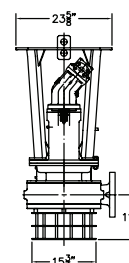
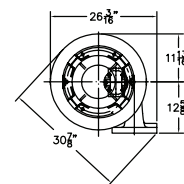
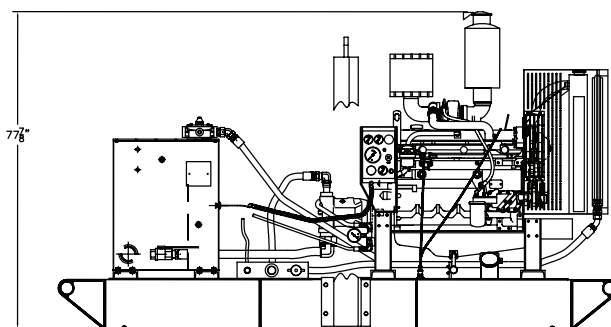
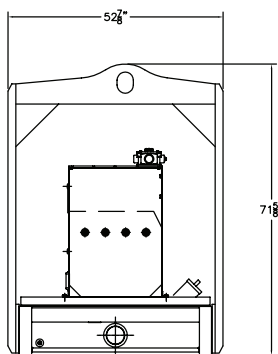
Performance data listed in table and curves based on water tests at sea level and 68°F (20°C). Maximum flows may require larger diameter pipes.

Drawings

(HS200HH hydraulic pump end and skid mount shown below)

Skid Mount Dry Weight: 5,200 lbs. (2358.68 kg)

Pumpend Dry Weight: 784 lbs. (355.61 kg)



Home Office:
Godwin Pumps of America, Inc.
84 Floodgate Road
Bridgeport, NJ 08014 USA
(856) 467-3636 • Fax: (856) 467-4841
sales@godwinpumps.com
www.godwinpumps.com

**godwin
pumps®**