

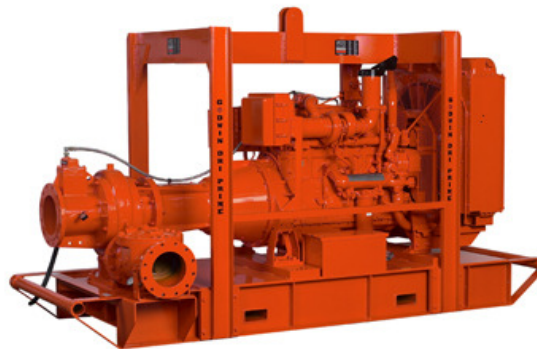
HL260M Dri-Prime Pump

HL260M

The Godwin Dri-Prime HL260M pump offers flow rates to 5,278 USGPM and discharge heads to 481' (147 m). Also it has the capability of handling solids up to 2" (50mm) in diameter.

The HL260M is able to prime to 28' (8.5 m) of suction lift from dry.

Indefinite dry-running is no problem due to the unique Godwin oil bath mechanical seal design. Solids handling, dry-running and portability make the HL260M the perfect choice for dewatering and bypass applications. The standard model is mounted on a skid, with a highway trailer option.



Features

- Simple maintenance normally limited to checking fluid levels.
- Close coupled centrifugal pump with vacuum priming compressor mounted to a diesel engine. Also available in electric drive or as a bare shaft pumpend.
- Extensive application flexibility. It will handle sewage, slurries and liquids with solids up to 2" in diameter.
- Continuously operated Godwin venturi air ejector priming device requiring no form of periodic adjustment or control.
- Dry-running heavy duty mechanical seal with abrasion resistant interfaces.
- Also available as a Critically Silenced unit which drastically reduces noise levels of the pump.
- Standard engine Caterpillar C15. Also available with Caterpillar C18.
- The volute & suction cover are made from cast steel bs3100 a5 and the impeller is made from cast steel bs3100 a5 hardness to 200 hb brinell.

Specifications

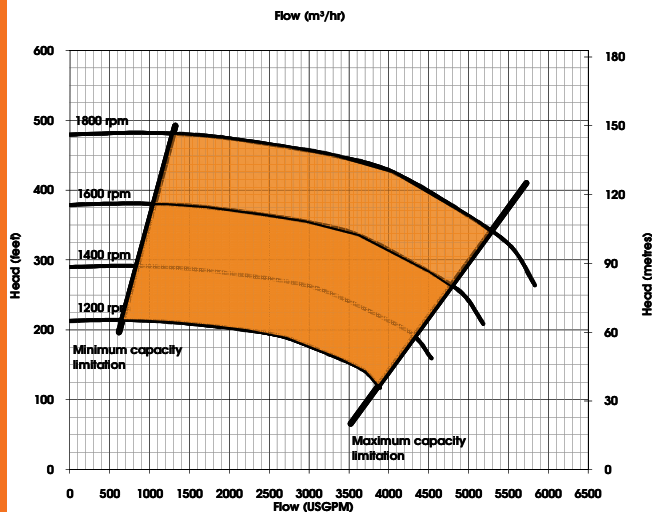
Suction connection	10" 125# ANSI B16.1
Delivery connection	10" 150# ANSI B16.1
Max capacity	5278 USGPM
Max head	481' (147 m)
Max solids handling	2" (50mm)
Max Impeller diameter	21" (540mm)
Max operating temp	176°F (80°C)
Max working pressure	232.1 psi (16.0 bar)
Max suction pressure	87.0 psi (6.0 bar)
Max casing pressure	348.1 psi (24.0 bar)
Max operating speed	1800 rpm

godwin 
a xylem brand

Reference number : 95-1119-3000
Date of issue : August 25, 2011
Issue : 1

Please contact Godwin for further details.
A typical picture of the pump is shown.
All information is approximate and for general guidance only.

Performance Curve



Engine option 1

Caterpillar, C15, 474.4 HP @ 1800 rpm

Impeller diameter 21" (540mm)

Suction Lift Table

Total Suction Head (')	Total Delivery Head (')				
	361	394	427	443	459
Output (USGPM)					
9.8	4733	4073	3302	2642	1321
15.1	4733	4073	3302	2642	1321
20.0	3742	3522	3082	2201	1761
24.9	2201	1761	1321	881	-

Fuel capacity (Full) 322 US Gal, (Usable) 322 US Gal

Fuel consumption @ 1800 rpm BEP 20 US Gal/hr

Weight: (Dry) 11,590 lbs, (Wet) 14,330 lbs

Dimensions: (L) 171" x (W) 76" x (H) 98"

Materials

Pump casing & suction cover	Cast steel BS3100 A5
Wearplates	Cast Iron - Chrome 1.0/1.5% Nickle 2%
Pump Shaft	Nickel Chrome Steel to BS970-1:1991 Grade 817M40T EN24T
Impeller	Cast Steel BS3100 A5 Hardness to 200 HB Brinell
Non-return valve body	Cast Iron
Mechanical seal faces	Inboard TC v TC, Outboard Silicon carbide v Carbon

Engine option 2

Caterpillar, C18, 580.2 HP @ 1600 rpm

Impeller diameter 21" (540mm)

Suction Lift Table

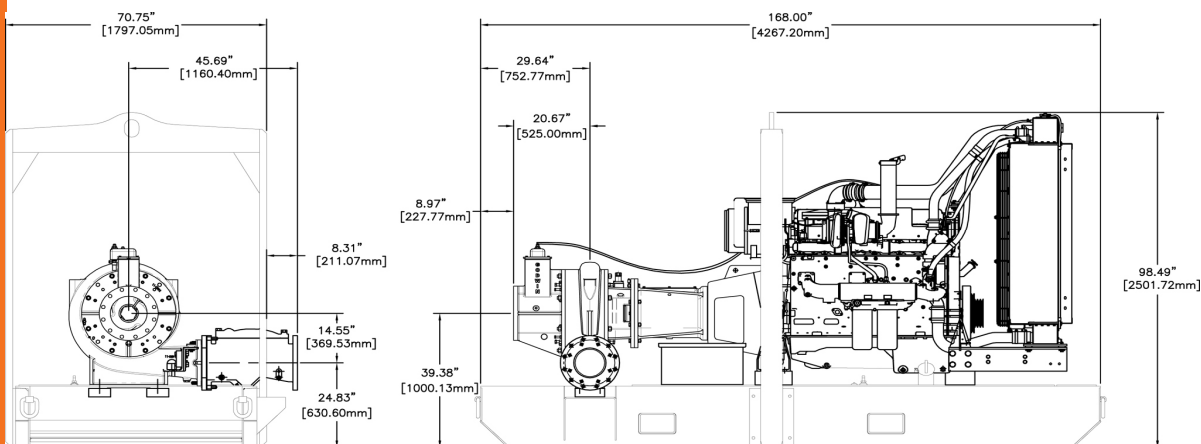
Total Suction Head (')	Total Delivery Head (')				
	277	303	329	342	355
Output (USGPM)					
9.8	4207	3620	2935	2348	1174
15.1	4207	3620	2935	2348	1174
20.0	3327	3131	2740	1957	1565
24.9	1957	1565	1174	783	-

Fuel capacity (Full) 322 US Gal, (Usable) 322 US Gal

Fuel consumption @ 1600 rpm BEP 25 US Gal/hr

Weight: (Dry) 11,590 lbs, (Wet) 14,330 lbs

Dimensions: (L) 171" x (W) 76" x (H) 98"



Performance data provided in tables is based on water tests at sea level and 68°F ambient.

All information is approximate and for general guidance only.

Please contact Godwin Pumps for further details.

Reference number : 95-1119-3000

Date of issue : August 25, 2011

Issue : 1

godwin 
a xylem brand

84 Floodgate Road | Bridgeport, NJ 08014

P: (856) 467-3636 | F: (856) 467-4841

sales@godwinpumps.com | godwinpumps.com

Godwinpumps, Dri-Prime® and the color orange for pumps are registered trademarks of Godwin Pumps. Specifications and illustrations are subject to revision without notice. Godwin Pumps is not liable for any incompleteness or inaccuracies. Godwin Pumps is not liable for any consequential, incidental or indirect damages relating to these specifications or their use. Godwin Pumps is a direct wholly owned subsidiary of Xylem Inc.

HL260M