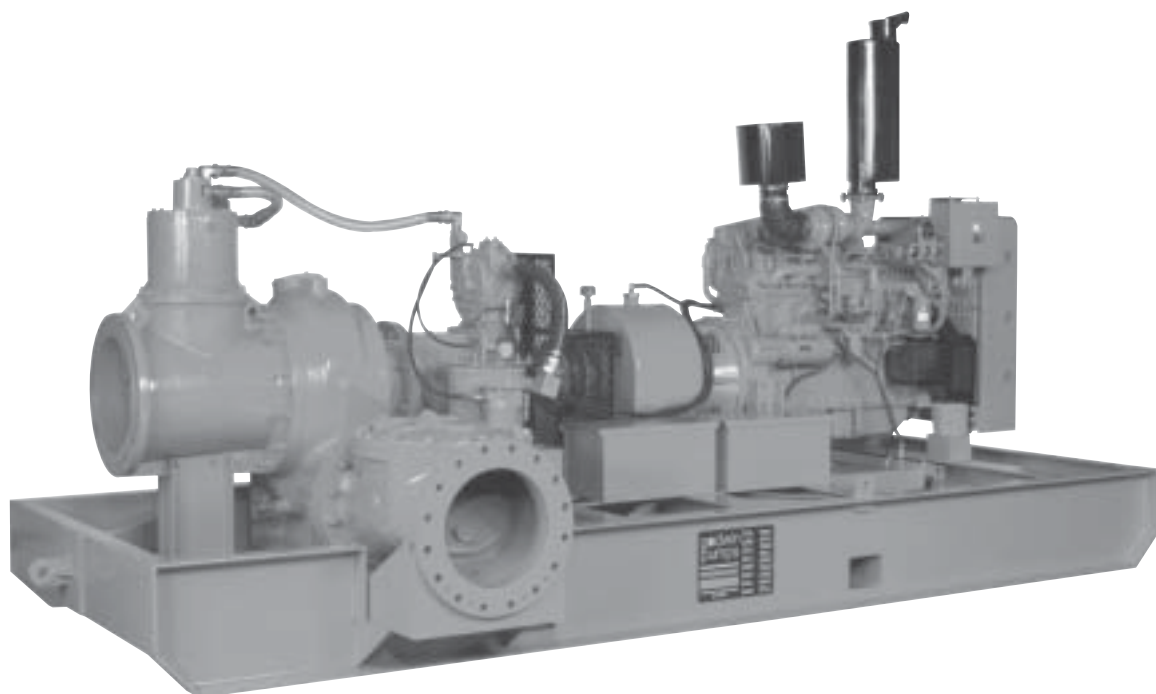


CD400M Dri-Prime® Pumps

CD400M

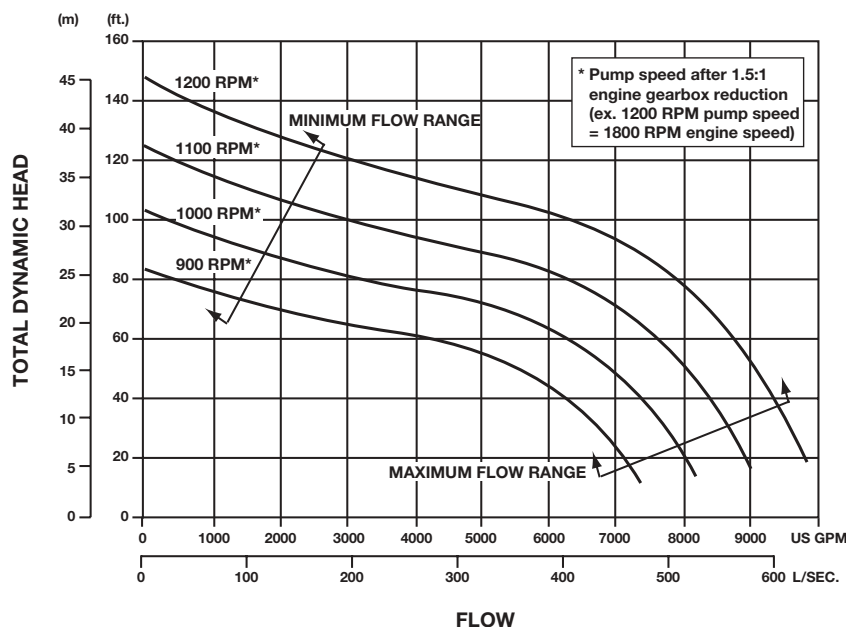


Godwin's CD400M Dri-Prime is an 18" x 16" (450mm x 400mm) centrifugal trash pump perfect for your biggest jobs. Offering flows to 10,000 gallons per minute (631 l/sec.), discharge heads to 150' (46M), and solids handling to 5" (125mm) in diameter, the CD400M moves large volumes of water and provides the ease of automatic priming to 28 feet (8.5M). For intermittent flows, the double high pressure mechanical seal means the CD400M can run dry indefinitely without damage. And the underslung discharge flange makes pump connections easy and efficient. When your job calls for both high volume and high head, the Godwin CD400M is the pump that does it all.

Features

- Direct drive automatic priming 18" x 16" (450mm x 400mm) high volume centrifugal pump with vacuum priming system mounted to the pump unit. Also available in electric drive or as bare shaft pumpend.
- Extensive application flexibility — handles raw sewage, sludges and liquids with solids up to 5" (125mm) in diameter.
- Underslung side discharge for easy pipe connection.
- Double, high pressure mechanical seal with high abrasion resistant silicon carbide interfaces. Oil bath immersion for dry running.
- Skid base mount incorporates forklift pockets and four point lifting eyes for versatility in handling.
- Simple maintenance — normally limited to checking engine oil, vacuum pump oil and seal lubrication.
- Standard Caterpillar C-9 engine. Also available with a variety of other engines including John Deere, Cummins and Deutz.
- Integral 10 gallon service fuel tank, plus convenient connections for attaching to auxiliary fuel cell.

CD400M Performance Curve



Performance Table

Diesel Set: Caterpillar C-9, 275 hp (205 kw) @ 1800 rpm

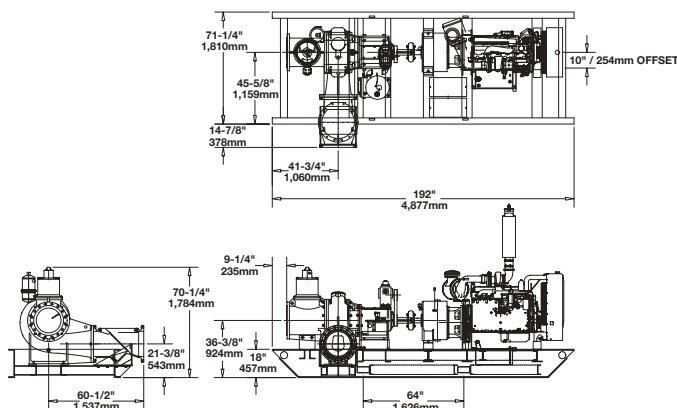
Impeller Diameter: 19-11/16 inches (500 mm)

Total Delivery Head — Feet				
Total Suction	40	60	80	100
Head — Feet	Output — GPM			
10	9250	8700	7800	6000
15	9220	8670	7780	5990
20	8300	7800	7200	5900
25	5600	5400	5200	4700

Performance data listed in table and curves are based on water tests at sea level and 68° F (20° C). Larger diameter pipes may be required for maximum flows.

Dimensions

CD400M — shown with Caterpillar Engine, Skid Base
Weight: 13,500 lbs. (6,124 kg.)



Specifications

Maximum Operating Speed:

Engine: 1800 rpm

Pump: 1200 rpm

Maximum Operating Temperature:

+194° F (90° C)

Maximum Working Pressure:

73 psi (5.0 BAR)

Maximum Suction Pressure:

90 psi (6.2 BAR)

Maximum Casing Pressure:

110 psi (7.6 BAR)

Fuel Consumption (full load & max. speed):

Caterpillar C-9:

13.94 gph (52.8 lph) @ 1800 rpm

Pipe Connections:

18 inch (450mm) ASA 150# Suction

16 inch (400mm) ASA 150# Discharge

Solids Handling:

5" (125mm) diameter

Materials

Pump Casing, Suction Cover, Separation Tank, and Wearplates

Close Grained Cast Iron

Impeller:

Cast Steel

Pump Shaft:

1-1/2% Nickel/Chromium Steel

Non Return Valve Body Ejector Housing:

Close Grained Cast Iron

Non Return Valve Flapper:

High Nitrile Rubber

Mechanical Seal Faces:

Solid Silicon Carbide

godwin
pumps

One Floodgate Road, Bridgeport, NJ 08014, USA
(856) 467-3636 • Fax: (856) 467-4841

Quenington, Cirencester, Glos., GL7 5BX, UK
+44 (0)1285 750271 • Fax: +44 (0)1285 750352

E-mail: sales@godwinpumps.com
www.godwinpumps.com

BRANCH LOCATIONS:

Connecticut • Pennsylvania • New York • Ohio
Illinois • Maryland • Virginia • West Virginia
North Carolina • South Carolina • Georgia
Florida • Texas • Montana • California • Washington

Dri-Prime® and the color orange for pumps are registered trademarks of Godwin Pumps of America, Inc.

Specifications and illustrations are subject to revision without notice.

© Copyright 2003-2005 Godwin Pumps of America, Inc.

All rights reserved.